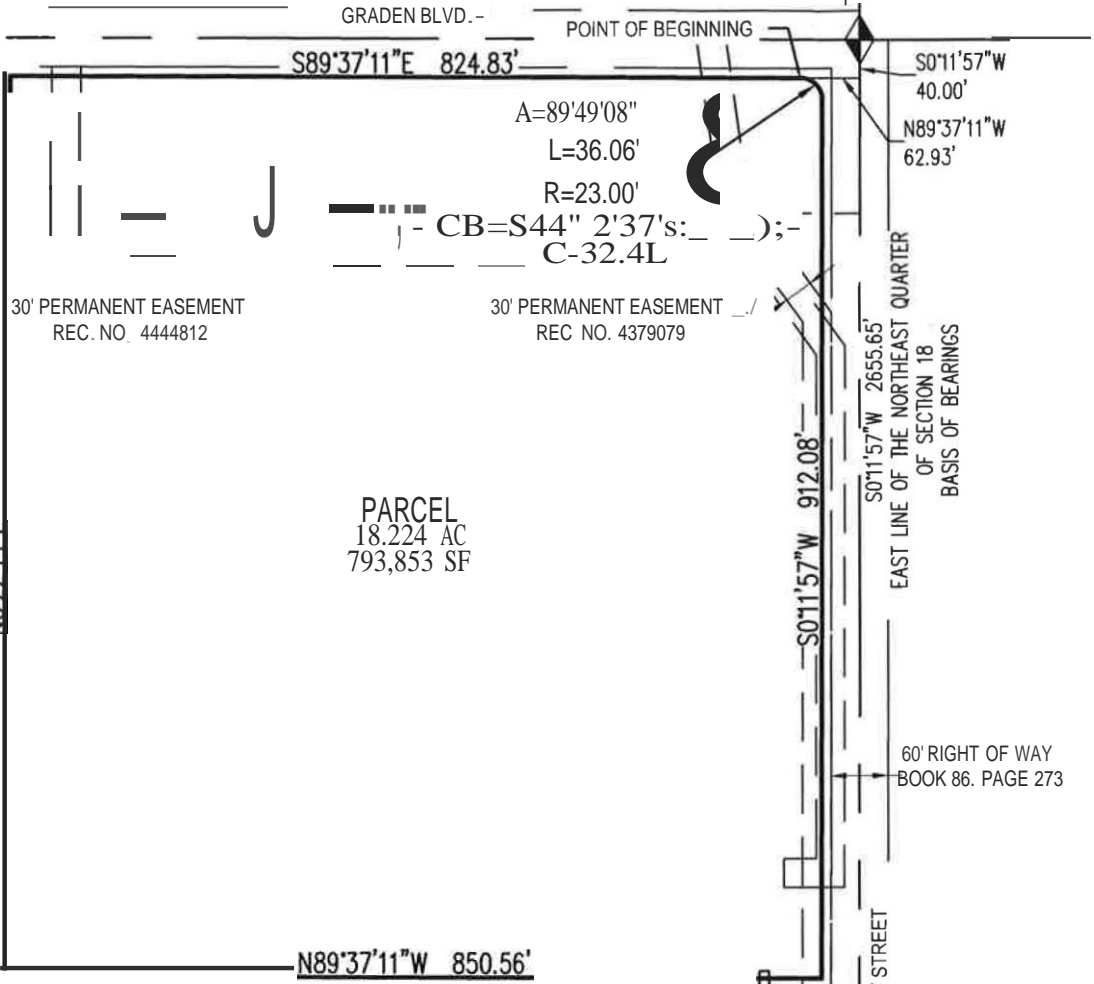


EXHIBIT B

POINT OF COMMENCEMENT
NORTHEAST CORNER
SECTION 18, T. 1 N., R. 67 W.
FOUND NUMBER 6 REBAR
WITH A 3-1/4" ALUMINUM CAP
STAMPED "LS 38100, 2008"



180' PSCO EASEMENT REC. NO.
1501255 AND 1501256



LEGEND

- ALLOT CORNER (AS DESCRIBED)
- REC. NO. RECEPTION NUMBER
- SECTION LINE
- PROPOSED PARCEL
- EXISTING EASEMENT LINE
- ALL LINEAL UNITS ARE US SURVEY FEET

EAST QUARTER CORNER
SECTION 18, T. 1 N., R. 67 W.
FOUND NUMBER 6 REBAR
WITH A 2-1/2" ALUMINUM CAP
STAMPED "LS 28656, 1993"

A
N



BRIDLE CREEK PARCEL

PART OF THE NORTH HALF OF SECTION 18, T. 1 N., R. 67 W., 6TH P.M.
CITY OF DACANO, COUNTY OF WELD, COLORADO

Project No: EIC000001.10
 Drawn By: AN
 Checked By: FAK
 Date: 6/11/19

Galloway

5265 Ronald Reagan Blvd. Suite 210
Johnstown, CO 80534
970 800 3300 • GallowayUS.com